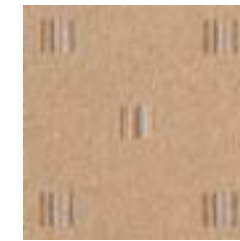




64/29992 mineral check



186/29994
mandarin plaid



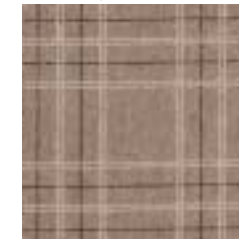
186/30485
mandarin square



52/30003
mandarin circle



186/30001
mandarin stripe runner



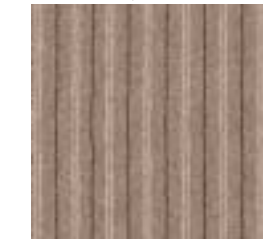
501/29994
earth plaid



501/29998
earth quartz



52/29996
earth crystals



501/30001
earth stripe runner



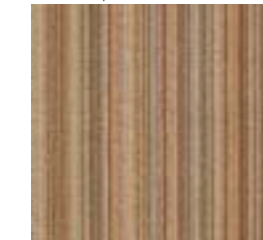
64/29999
mineral cubes



64/29992
mineral check



64/30000
mineral lunar



64/29995
mineral strata runner



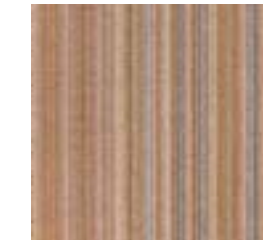
52/30107
sandalwood chequers



132/29993
sandalwood dots



52/30002
sandalwood lunar



132/29997
sandalwood strata runner



wheelmark certification

design no.	repeat down	repeat across	match	©
29992	0.083m (3 1/4")	0.083m (3 1/4")	self	©2003
29993	0.083m (3 1/4")	0.083m (3 1/4")	self	©2003
29994	0.244m (9 5/8")	0.250m (9 7/8")	self	©2003
29995	continuous	0.690m (27")	runner	©2003
29996	0.413m (16 1/4")	0.500m (19 5/7")	self	©2003
29997	continuous	0.690m (27")	runner	©2003
29998	0.171m (6 3/4")	0.167m (6 4/7")	self	©2003

design no.	repeat down	repeat across	match	©
29999	0.083m (3 1/4")	0.083m (3 1/4")	self	©2003
30000	0.330m (13")	0.333m (13 1/7")	self	©2003
30001	continuous	0.690m (27")	runner	©2003
30002	0.330m (13")	0.333m (13 1/7")	self	©2003
30003	0.413m (16 1/4")	0.500m (19 5/7")	self	©2003
30107	0.330m (13")	0.333m (13 1/7")	self	©2003
30485	0.254m (10")	0.250m (9 7/8")	self	©2003

pure living

construction - woven axminster
pile yarn - 80% wool 20% nylon
rows - 8 per inch
widths - 4.00m (13' 1 1/2") and 0.69m (27") runner
commercial suitability - heavy

Brintons

technical specification

range	construction	pile content	widths available	rows/inch	pitch/inch	wheelmark certification	suitability
@play	woven axminster	80% wool, 20% nylon	0.69m (27")	7.5	7	Y	heavy
abbotsford	woven axminster	80% wool, 20% nylon	4.00m (13' 1/2")	9	7	Y	heavy
bell twist	woven wilton	80% wool, 20% nylon	3.66m (12' 0"), 4.57m (15' 0")	9	8	Y	extra heavy
designer	woven axminster	80% wool, 20% nylon	3.66m (12' 0")	7	7	Y	medium
duet	tufted	80% wool, 20% nylon	4.00m (13' 1/2"), 5.00m (16' 5")	stitch rate 9.8	gauge 10		medium
escape	woven axminster	80% wool, 17% nylon, 3% mixed fibres	4.00m (13' 1/2"), 0.69m (27") border	9	7	Y	heavy
espana	woven axminster	80% wool, 20% nylon	3.66m (12' 0")	8	7	Y	heavy
finepoint	woven wilton	80% wool, 20% nylon	3.66m (12' 0"), 4.57m (15' 0")	10	8	Y	extra heavy
galleria	woven axminster	80% wool, 20% nylon	3.66m (12' 0"), 0.69m (27") border	9	7	Y	heavy
kinetic	woven axminster	80% wool, 17% nylon, 3% mixed fibres	3.66m (12' 0")	8	7	Y	heavy
life - central (chess & stitch)	flatweave	weft = 100% nylon warp = 80%, 20%	4.00m (13' 1/2")	n/a	n/a		medium (not stairs)
life - core (calico)	tufted	100% wool	4.00m (13' 1/2"), 5.00m (16' 5")	n/a	gauge 6.4		medium
life - core (trellis, wicker, quattro & rattan)	tufted	100% wool	4.00m (13' 1/2"), 5.00m (16' 5")	n/a	gauge 6.4		medium
life - core (twill)	tufted	100% wool	4.00m (13' 1/2"), 5.00m (16' 5")	n/a	gauge 6.4		medium
life - woven (tweed, twine & hopsack)	woven axminster	80% wool, 20% nylon	3.66m (12' 0")	8	7	Y	heavy
life - woven (masai)	woven wilton	80% wool, 20% nylon	3.66m (12' 0")	8	8		heavy
majestic	woven wilton	80% wool, 20% nylon	3.66m (12' 0"), 4.57m (15' 0")	12	8		extra heavy
marquis	woven axminster	80% wool, 20% nylon	4.00m (13' 1/2"), 0.69m (27") border	10	7	Y	extra heavy
marrakesh	woven axminster	80% wool, 20% nylon	4.00m (13' 1/2")	7	7	Y	medium
palace design	woven axminster	80% wool, 20% nylon	4.00m (13' 1/2")	9	7	Y	heavy
paloma	woven axminster	80% wool, 20% nylon	4.00m (13' 1/2")	8	7	Y	heavy
performing art	woven axminster	80% wool, 17% nylon, 3% mixed fibres	2.00m (6' 6 3/4")	8	7	Y	heavy
pure living	woven axminster	80% wool, 20% nylon	4.00m (13' 1/2"), 0.69m (27") runner	8	7	Y	heavy
regina international and focal point	woven axminster	80% wool, 20% nylon	3.66m (12' 0")	7	7	Y	medium
renaissance	woven axminster	80% wool, 20% nylon	3.66m (12' 0"), 0.69m (27") runner	8	7		heavy
renaissance classics	woven axminster	80% wool, 20% nylon	3.66m (12' 0"), 0.69m (27") runner	10	7	Y	extra heavy
zenith	woven axminster	80% wool, 20% nylon	0.69m (27")	7.5	7	Y	heavy

range	pile height above backing	pile weight above backing	total carpet thickness	total pile weight	total carpet weight	international flammability details	USA	France	Germany	Austria
						ASTM F 648	NFP 92-505	DIN 4102	BS 5810:2000	
@play	6.8 mm (0.27")	820 g/m ² (24.18 oz/sq.yd)	9.5 mm (0.37")	1096 g/m ² (32.32oz/sq.yd)	2033 g/m ² (59.95 oz/sq.yd)	class 1	!		B1	!
abbotsford	7.0 mm (0.28")	990 g/m ² (29.19 oz/sq.yd)	10.1 mm (0.40")	1315 g/m ² (38.78 oz/sq.yd)	2130 g/m ² (62.81 oz/sq.yd)	class 1	M3		B1	B1/Q1
bell twist	5.9 mm (0.23")	1070 g/m ² (31.55 oz/sq.yd)	8.9 mm (0.35")	1409 g/m ² (41.55 oz/sq.yd)	2329 g/m ² (68.68 oz/sq.yd)	class 1	M3		B1	B1/Q1
designer	8.0 mm (0.31")	935 g/m ² (27.57 oz/sq.yd)	10.7 mm (0.42")	1189 g/m ² (35.06 oz/sq.yd)	1995 g/m ² (58.83 oz/sq.yd)	class 1	M3		B1	B1/Q1
duet	6.5 mm (0.26")	990 g/m ² (29.19 oz/sq.yd)	9.2 mm (0.36")	1356 g/m ² (40.00 oz/sq.yd)	2427 g/m ² (71.57 oz/sq.yd)	!	!	!	!	!
escape	7.3 mm (0.29")	985 g/m ² (29.05 oz/sq.yd)	10.0 mm (0.39")	1315 g/m ² (38.78 oz/sq.yd)	2130 g/m ² (62.81 oz/sq.yd)	class 1	M3		B1	B1/Q1
espana	8.1 mm (0.32")	1065 g/m ² (31.41 oz/sq.yd)	10.0 mm (0.39")	1422 g/m ² (41.93 oz/sq.yd)	2368 g/m ² (69.83 oz/sq.yd)	!	!	!	!	!
finepoint	6.0 mm (0.24")	1000 g/m ² (29.49 oz/sq.yd)	9.2 mm (0.36")	1363 g/m ² (40.19 oz/sq.yd)	2340 g/m ² (69.01 oz/sq.yd)	class 1	M3		B1	B1/Q1
galleria	7.0 mm (0.28")	990 g/m ² (29.19 oz/sq.yd)	10.1 mm (0.40")	1315 g/m ² (38.78 oz/sq.yd)	2302 g/m ² (67.88 oz/sq.yd)	class 1	M3		B1	B1/Q1
kinetic	6.5 mm (0.26")	820 g/m ² (24.18 oz/sq.yd)	9.2 mm (0.36")	1111 g/m ² (32.76 oz/sq.yd)	2025 g/m ² (59.72 oz/sq.yd)	class 1	M3		B1	!
life - central (chess & stitch)	n/a	n/a	4.9 mm (0.19")	885 g/m ² (26.10 oz/sq.yd)	2150 g/m ² (63.40 oz/sq.yd)	!	!	!	!	!
life - core (calico)	4.0 mm (0.16")	n/a	8.0 mm (0.31")	1250 g/m ² (36.86 oz/sq.yd)	2650 g/m ² (78.15 oz/sq.yd)	!	!	!	!	!
life - core (trellis, wicker, quattro & rattan)	5.0 mm (0.20")	n/a	9.0 mm (0.35")	1300 g/m ² (38.34 oz/sq.yd)	2350 g/m ² (69.30 oz/sq.yd)	class 1	M3		B1	!
life - core (twill)	5.0 mm (0.20")	n/a	9.0 mm (0.35")	1300 g/m ² (38.34 oz/sq.yd)	2700 g/m ² (79.62 oz/sq.yd)	!	!	!	!	!
life - woven (axminster)	8.6 mm (0.34")	1065 g/m ² (31.41 oz/sq.yd)	11.3 mm (0.44")	1359 g/m ² (40.08 oz/sq.yd)	2274 g/m ² (67.06 oz/sq.yd)	class 1	!	!	!	!
life - woven (wilton masai)	6.0 mm (0.24")	n/a	7.3 mm (0.29")	1491 g/m ² (43.97 oz/sq.yd)	2551 g/m ² (75.23 oz/sq.yd)	class 1	M3		B1	!
majestic	8.5 mm (0.33")	1575 g/m ² (46.45 oz/sq.yd)	11.3 mm (0.44")	2064 g/m ² (60.87 oz/sq.yd)	3010 g/m ² (88.76 oz/sq.yd)	class 1	M3		!	!
marquis	7.0 mm (0.28")	1060 g/m ² (31.26 oz/sq.yd)	10.1 mm (0.40")	1462 g/m ² (43.11 oz/sq.yd)	2272 g/m ² (67.00 oz/sq.yd)	class 1	M3		B1	B1/Q1
marrakesh	8.0 mm (0.31")	935 g/m ² (27.57 oz/sq.yd)	10.7 mm (0.42")	1189 g/m ² (35.06 oz/sq.yd)	2031 g/m ² (59.89 oz/sq.yd)	class 1	M3		B1	!
palace design	7.0 mm (0.28")	990 g/m ² (29.19 oz/sq.yd)	10.1 mm (0.40")	1315 g/m ² (38.78 oz/sq.yd)	2130 g/m ² (62.81 oz/sq.yd)	class 1	M3		B1	B1/Q1
paloma	8.6 mm (0.34")	1065 g/m ² (31.41 oz/sq.yd)	11.3 mm (0.44")	1359 g/m ² (40.08 oz/sq.yd)	2317 g/m ² (68.33 oz/sq.yd)	class 1	!	!	!	!
performing art	6.4 mm (0.25")	825 g/m ² (24.33 oz/sq.yd)	9.5 mm (0.37")	1111 g/m ² (32.76 oz/sq.yd)	1875 g/m ² (55.29 oz/sq.yd)	class 1	M3		B1	!
pure living	8.6 mm (0.34")	1065 g/m ² (31.41 oz/sq.yd)	11.3 mm (0.44")	1359 g/m ² (40.08 oz/sq.yd)	2123 g/m ² (62.61 oz/sq.yd)	class 1	!	!	!	!
regina international and focal point	8.0 mm (0.31")	935 g/m ² (27.57 oz/sq.yd)	10.7 mm (0.42")	1189 g/m ² (35.06 oz/sq.yd)	1995 g/m ² (58.83 oz/sq.yd)	class 1	M3		B1	B1/Q1
renaissance	9.6 mm (0.38")	1275 g/m ² (37.60 oz/sq.yd)	12.7 mm (0.50")	1549 g/m ² (45.68 oz/sq.yd)	2464 g/m ² (72.66 oz/sq.yd)	class 1	!	!	!	!
renaissance classics	9.0 mm (0.35")	1335 g/m ² (39.37 oz/sq.yd)	11.7 mm (0.46")	1699 g/m ² (50.10 oz/sq.yd)	2731 g/m ² (80.54 oz/sq.yd)	class 1	!	!	!	!
zenith	6.8 mm (0.27")	820 g/m ² (24.18 oz/sq.yd)	9.5 mm (0.37")	1096 g/m ² (32.32oz/sq.yd)	2033 g/m ² (59.95 oz/sq.yd)	class 1	!		B1	!

Performance / Test Results *

Flammability (UK)
Hot Metal Nut Test at 900°C (BS 4790)
Radius of burn = 25mm (1"). This indicates a low radius of burn category.
Methenamine Pill Test (BS 6307)
Radius of burn = 10mm (2/5"). This indicates a pass.

Other Flammability Details

Details or certificates on request

Static Electricity

The level of static electricity generated using the shoe tests specified in D.D68 will be below the threshold of human sensitivity down to 30% relative humidity.

Other Test Details

Other performance details together with tolerances applying to the above results can be provided on request. Many of the above ranges meet the marine flammability requirements as described by IMO. Please contact our technical services department for further details: tel: +44 (0) 1562 635446 or email: technical@brintons.co.uk



wheelmark certification

This stamp of approval by a notified body shows that the carpet conforms with the International Maritime Organisation (IMO) Safety Of Life At Sea (SOLAS) requirements for spread of flame and smoke/toxicity.

All designs are copyright and may not be reproduced without express permission of Brintons Limited, Kidderminster, England. Brintons reserve the right to amend specifications without prior notice. All colours are reproduced as accurate as the printing process will allow.



ISO standard

All products manufactured by Brintons are made to global quality standards at its own manufacturing plants in the UK, Portugal, India or Australia and conforms to ISO 9001:2000 standard.

WORLDWIDE OFFICES

UNITED KINGDOM

Brintons Limited
Kidderminster - Head Office
PO Box 16
Exchange Street
Kidderminster
Worcestershire
DY10 1AG
tel: +44 (0) 1562 635665
fax: +44 (0) 1562 634737
email: solutions@brintons.co.uk

London
1/7 Chelsea Harbour Design Centre
Chelsea Harbour
London
SW10 0XE
tel: +44 (0) 207 3490020
fax: +44 (0) 207 3510746

FRANCE

Brintons France s.a.r.l.
95 rue du Fg Saint-Honoré
75008 Paris
tel: +33 1 58 18 33 60
fax: +33 1 58 18 33 61
email: brintons.france@wanadoo.fr

PORTUGAL

Brintons Indústria de Alcatifas Limitada
Rebordinho
3670-056 Campia
tel: +351 232 750060
fax: +351 232 750069
email: bridal@brintons.pt

INDIA

Brintons Carpets Asia Private Limited
Plot No's 414/415/416
Village - Urwade
Tal - Mulshi Dist
Pune
Maharashtra 412108
tel: +91 20 2292 9200
fax: +91 20 2292 9233
email: commercial@brintons.co.in

SINGAPORE

Brintons Limited
46A Club Street
Singapore 069423
tel: +65 6225 5690
fax: +65 6225 3034
email: brintons@singnet.com.sg

Brintons Limited
Room 6009-6010
Shanghai Overseas Chinese Mansion
NO 129
Yan An Xi Road
Shanghai 200040
tel: +86 21 6249 6340
fax: +86 21 6249 8079
email:
jessicanyberg@brintons-sh.com

UAE

Brintons Limited
PO Box 75768
Dubai
UAE
tel: +971 4 368 4417
fax: +971 4 368 4417
email: cgreybanks@brintons.co.uk

AUSTRALIA

Brintons PTY Limited
Geelong - Head Office
Mail: PO Box 788
Geelong
VIC 3220
Location: 32 - 36 Fellmongers Road
Breakwater
Geelong
VIC 3219
tel: +61 3 5226 3200
fax: +61 3 5229 0355
email: marketing@brintons.com.au

Showrooms:
21/76 Doggett Street
Fortitude Valley
Brisbane
QLD 4006
tel: +61 7 3257 0055
fax: +61 7 3257 0050
email: brisbane@brintons.com.au

35/3 Westside Avenue
Port Melbourne
VIC 3207
tel: +61 3 9676 3333
fax: +61 3 9676 3377
email: melbourne@brintons.com.au

580 Parramatta Road
Petersham
Sydney
NSW 2049
tel: +61 2 9564 6222
fax: +61 2 9564 6699
email: sydney@brintons.com.au

USA

Brintons USA
Atlanta - Head Office
1000 Cobb Place Boulevard
Bailey Park
Building 200 Suite 200
Kennesaw
GA 30144
tel: +678 594 9300
fax: +678 594 9301
email: brintons@brintonsusa.com

Oak Lawn Design Plaza No 408
1444 Oak Lawn
Dallas
TX 75207
tel: +214 651 7108
fax: +214 651 7241
email: mvitrano@brintonsusa.com

Spanish Oaks Plaza
3150 West Sahara No B13
Las Vegas
NV 89102
tel: +702 252 0027
fax: +702 252 0142
email: jcarlson@brintonsusa.com

1666 20th Street
Suite No 200A
Santa Monica
CA 90404
tel: +310 264 7570
fax: +310 264 7569
email: jdodd@brintonsusa.com

150 East 58th Street
3rd Floor
New York
NY 10155
tel: +212 832 0121
fax: +212 980 1505
email: bellis@brintonsusa.com

6550 Rock Spring Drive
Suite 675
Bethesda
Washington DC
MD 20817
tel: +301 656 3578
fax: +301 656 3578
email: aoldfield@brintonsusa.com

3846 SW 30th Avenue
Hollywood
Miami
FL 33312
tel: +954 584 9713
email: mdanko@brintonsusa.com

SOUTH AMERICA

Brintons USA
Av. de los INCAS 3295
P3-20
C1426ELC
Buenos Aires
Argentina
tel: +54 11 4552 0479
fax: +54 11 4554 2516
email: jorge.grosman@brintonsusa.com



BY APPOINTMENT
TO HER MAJESTY THE QUEEN
CARPET MANUFACTURERS
BRINTONS LIMITED, KIDDERMINSTER

AGENTS AND DISTRIBUTORS WORLDWIDE

Brintons