

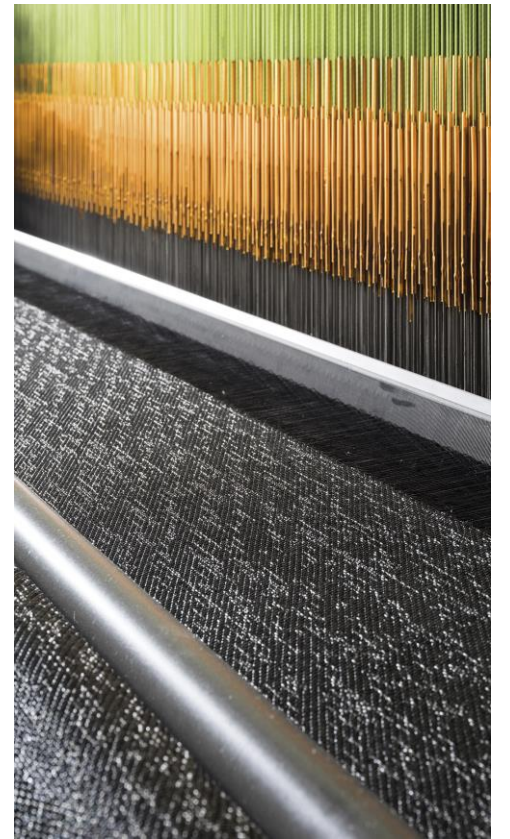


WOVEN VINYL FLOORING

2tec2[®]
high tech flooring

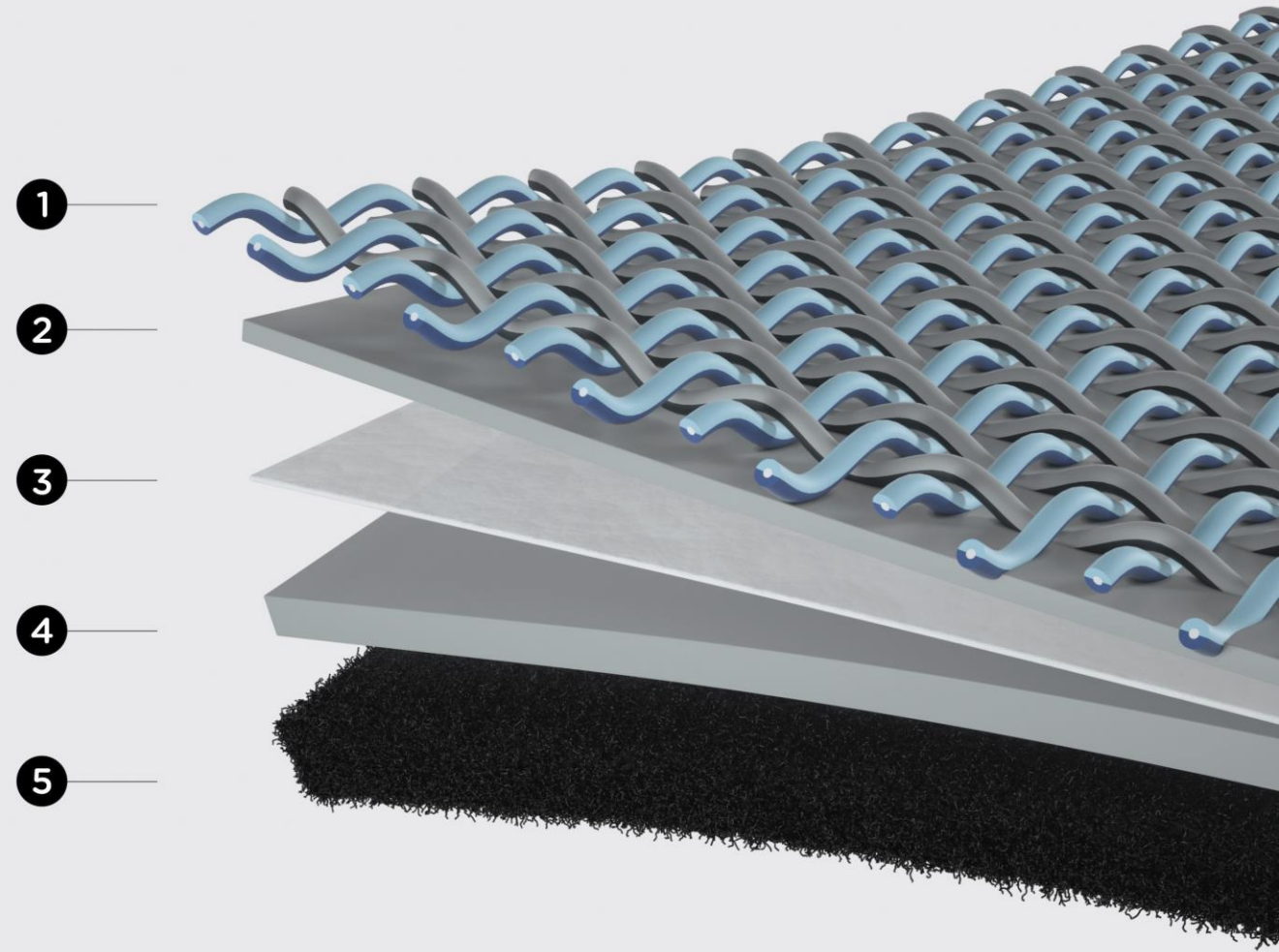
WHAT IS 2TEC2?

- Woven vinyl flooring made and designed in Belgium
- Woven on Jaquard weaving looms to create a real 3D structure
- Designed to look like textile and to perform like hard flooring
- Composed of PVC & Fiberglass to sustain long-term heavy usage
- Developed for easy maintenance and high durability
- Seamless flooring design for contemporary architectural projects



ACOUSTIC COMFORT BACKING

1. 2tec2 Woven Layer
2. PVC layer
3. Glass fiber layer
4. PVC layer
5. New additional acoustic layer





2TEC2 COLLECTIONS

2tec2 offers various pattern collections divided over 3 sample books:

- **COLOURFUL**
 - Colourful
 - Cracked Earth
 - Herringbone
 - Lustre
 - Stripes
 - Barcode
- **MINERALS**
 - Marble
 - Desert
- **UNIVERSE**
 - Hybrid
 - Infinite



TECHNICAL DATA

Warranty	10 years*		Environment, health and safety
Composition	85% vinyl 7% Polyurethane 8% PVC		Recycled Content
Backing	Vinyl + Felt	Acoustical layer	Yes
Total thickness	ISO 7865	2 mm 0.020"	70% recycled content
Total weight	ISO 8543	3000 g/m ² 88.5 lb/yd ²	Reach
Roll width	EN ISO 24541	180 cm 68.9"	LEED v4
Roll length	EN ISO 24541	ca. 30 m 22.9 yd	BREEAM International
Tile size	EN 994	500x500 mm 19.69" x 19.69"	CDPH Standard Method V12
Level of use	EN 1507 ASTM D5252	Class 33 Heavy commercial use	BREEAM NDR
Foot traffic test	ASTM D618-10	Heavy traffic	French VOC Regulation
Caster chair suitability	EN 985	Continuous use	Air Certified
Reaction to fire	EN 13501-1	BF-s1	French CMR components
Critical radiant flux	ASTM E648-06a NFPA	0.86 W/cm ² Class 1	Pass
Smoke density	ASTM E632	< 200	Belgian VOC Regulation
Walking test	ISO 8356 AATCC 154-2006	< 2 kv Permanently antistatic	Indoor Air Comfort Gold
Light fastness	ISO 105-B02	> 8	Blue Angel (RAL UZ120)
Slip resistance	EN 15693 ASTM C1028-07 DIN 51077 EN 15336-4	> 0.3 0.99 65	EN 7171
Impact sound reduction	ISO 10140	19 dB	MI Protocol of July 2017
Acoustical absorption	ISO 354	aw = 0.15	Pass
Walking noise reduction	EPLF 02029-3	SL70	Plasticizer Content
Dimensional stability	EN 986 ISO 2551	Meets the requirements	Phthalate Free
Thermal resistance	ISO 8302	Suitable for underfloor heating	
CE Certificate	EN 14041	0492-CPI-031	

*On request on demand - Terms and conditions are available on request.

INSTALLATION PATTERNS FOR TILES

Ashlar Brick Nonstitch Quarterturn

DESIGNED & MADE IN BELGIUM

COLOURFUL





COLOURFUL

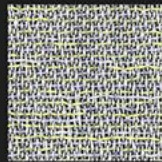
Roll • Tile



Zenith



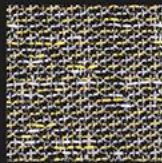
Asteroid



Atmosphere



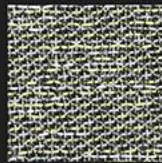
Equinox



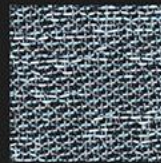
Quasar



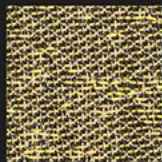
Corona



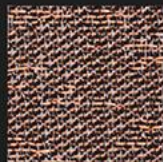
Zodiac



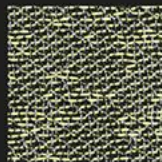
Aurora



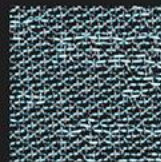
Supernova



Fireball



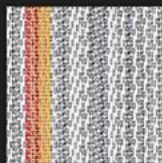
Orbital



Pulsar

STRIPES

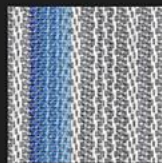
Roll • Tile



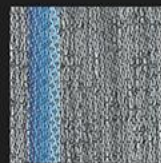
Diamond Orange



Moonless Night Orange



Diamond Blue



Moonless Night Blue

2tec2[®]
high tech flooring



TRY OUT OUR
2TEC2 SIMULATION TOOL!

COMMERCIAL WOVEN VINYL FLOORING
DESIGNED & MADE IN BELGIUM

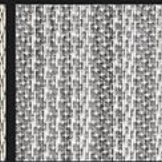
WWW.2TEC2.COM

BARCODE

Roll • Tile



Quartz



Diamond



Arid

CRACKED EARTH

Roll • Tile



HERRINGBONE

Roll



Oyster



Dune



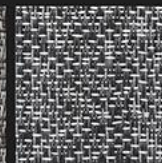
Sandstone

LUSTRE

Roll • Tile



Marlon Brown



Magnetite Grey



CATALOGUE

47

54

53

52

52

BOOKS FOR BABIES
0-3 YEARS

Emergence
Sensory and Sensation
Language

THE CLASH WITH THE
BUG BLOWERS

THE CLASH WITH THE
BUG BLOWERS

THE CLASH WITH THE
BUG BLOWERS

THE CLASH WITH THE
BUG BLOWERS

THE CLASH WITH THE
BUG BLOWERS

THE CLASH WITH THE
BUG BLOWERS



TECHNICAL DATA

Warranty	10 years*		Environment, Health and safety	Recycled Content	Yes
Composition	88% vinyl 7% Fibreglass 5% PVC		Acoustical layer	70% recycled content	
Backing	Vinyl + Felt		Reach	Compliant	
Total thickness	ISO 785	5 mm 0.20"	LEED v4	Compliant (LEED Contributing Product)	
Total weight	ISO 8543	3000 g/m ² 88.5 lb/100 yd ²	BREEAM* International	Compliant	
Roll width	EN ISO 24741	18,200 cm 68.127"	CDM Standard Method V1.2	Pass	
Roll length	EN ISO 24741	64,30 m 212.5 ft	BREEAM* INOR	Pass	
Tile size	EN 994	50 x 50 cm 19.69" x 19.69"	French VOC Regulation	A+ Certified	
Level of use	EN 1507 ASTM D5252	Class 32 Heavy commercial use	French CMR components	Pass	
Foot traffic test	ASTM D619-12	Heavy traffic	AGBB/ABG	Pass	
Castor chair suitability	EN 965	Continuous use	Belgian VOC Regulation	Pass	
Reaction to fire	EN 13501-1	BF-s1	Indoor Air Comfort Gold	Pass	
Critical radiant flux	ASTM E648-08 NFPA	0.84 W/cm ² Class 1	Blue Angel (RAL UZ100)	Pass	
Smoke density	ASTM E822	< 300	EN 717-1	E1	
Walking test	ISO 6356 AATCC 134-2006	< 2 kv Permanently antistatic	Plasticizer Content	Phthalate Free	
Light fastness	ISO 105-B02	> 8	HI Protocol of July 2017	Pass	
Slip resistance	EN 15583 ASTM C1028-07 DIN 51077 EM 15035-4	> 0.3 0.95 R9 65			
Impact sound reduction	ISO 10140	19 dB			
Acoustical absorption	ISO 354	aw = 0.15			
Walking noise reduction	EPL F 02029-3	SL 30			
Dimensional stability	EN 996 ISO 2551	Meets the requirements			
Thermal resistance	ISO 8302	Suitable for interfloor heating			
CE Certificate	EN 14061	0493-CPR-051			

INSTALLATION PATTERNS FOR TILES

Monolithic Quarterturn

Roomroom, Chaussée d'Ansbokke 284 - B-7700 Mouscron, Belgium • www.2tec2.com • sales@2tec2.com
2tec2 reserves the right to alter material and characteristics without prior notice.
2tec2 is a registered trademark of Le 11stage d'Arcade S.A.

DESIGNED & MADE IN BELGIUM

MINERALS





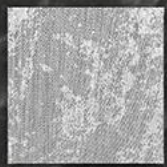
DESERT

Roll • Tile

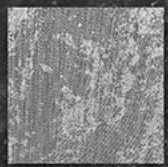
The Desert collection pays homage to the awe-inspiring stretches of arid wasteland that blanket our planet.

Though, the pattern may appear simple, just like the terrain it's named for, each piece is made of a unique and vibrant ecosystem, which creates an impressive, everlasting impression.

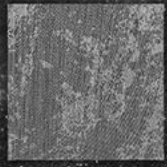
The visual elements of each piece, emulating shifting desert sands, will bring occupants back to the unadorned ways of life our nomadic ancestors once lived.



Farafa



Antarctic



Hoyos



Karakum



Gobi



Namib

atec2
high tech flooring



TRY OUT OUR
2TEC2 SIMULATION TOOL!

COMMERCIAL WOVEN VINYL FLOORING
DESIGNED & MADE IN BELGIUM

WWW.2TEC2.COM

MARBLE

Roll • Tile

Eminent, regal, and everlasting. These words come to mind when viewing our Marble collection.

This collection is inspired by the crystalline material that has been used to build impressive palace halls and acted as the canvas for breathtaking monuments throughout the ages.

Each design features the wild, yet purposeful streaks of color that are unique to its namesake, echoing the controlled chaos that can only come from nature's own design.



Carrara



Fior



Aliveri



Portoro



Triana



Emperador



Love of beauty is taste
The creation of beauty is art

CLINIC KOUTER CLINIC EDU



TECHNICAL DATA

Warranty	10 years*	Environment, health and safety	
Composition	85% Vinyl 7% Reinforcing 8% Filler	Recycled Content	Yes
Backing		Acoustical layer	70% recycled content
Total thickness	ISO 7855 3 mm 0.30"	Reach	Compliant
Total weight	ISO 8543 3000 g/m ² 88.62 lb/yd ²	LEED v4	Compliant (LEED Contributing Product)
Roll width	EN ISO 24541 1800 mm 68.9"	BREEM [®] International	Compliant
Roll length	EN ISO 24541 64.30 m 210.9'	CDM Standard Method V1.2	Pass
Tile size	EN 594 594.50 mm 23.39" x 19.69"	BREEM [®] NOR	Pass
Level of use	EN 1507 ASTM D5252 Class 31 Heavy commercial use	French VOC Regulation	A+ Certified
Foot traffic test	ASTM D618-12 Heavy traffic	French CSE components	Pass
Castor chair suitability	EN 985 Continuous use	ACBB/ABC	Pass
Reaction to fire	EN 13501-1 Bfl-s1	Belgian VOC Regulation	Pass
Critical radiant flux	ASTM E648 (sel NI PA) 0.84 W/cm ² Class 1	Indoor Air Comfort Gold	Pass
Smoke density	ASTM E822 < 300	Blue Angel (RAL UZ920)	Pass
Walking test	ISO 4856 AATCC 134-2006 4.2 kv Permanently antistatic	EN 177-1	61
Light fastness	ISO 105-B02 4.8	Plasticizer Content	Phthalate Free
Slip resistance	EN 13893 ASTM D1028-07 DN 5.00 PN 15336-4 19-25	MI Protocol of July 2017	Pass
Impact sound reduction	ISO 10140 19-25		
Acoustical absorption	ISO 354 ew = 0.15		
Walking noise reduction	ISO 10140-3 SL70		
Dimensional stability	EN 596 ISO 2951 Meets the requirements		
Thermal resistance	ISO 8502 Suitable for underfloor heating		
CE Certificate	EN 14041 0493-CFR-051		

*CE marked for Belgium. **Terms and conditions are available on request.

INSTALLATION PATTERNS FOR TILES

ARROW Brick Quarter turn

DESIGNED & MADE IN BELGIUM

UNIVERSE





HYBRID

Roll • Tile



Stellar



Magellan



Stardust



Helios



Lyra



Darkside



Meteor



Celeste



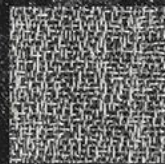
Galena



Solaris



Rosetta



Halley

2tec2

high-tech flooring



TRY OUT OUR
2TEC2 SIMULATION TOOL!

COMMERCIAL WOVEN VINYL FLOORING
DESIGNED & MADE IN BELGIUM

WWW.2TEC2.COM

INFINITE

Roll • Tile



Desertino



Topazino



Moonrock



Coffee Bean



Juno



Fântino



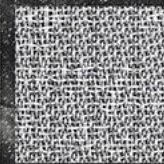
Orion



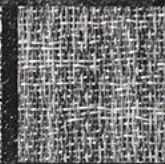
Nebula



Comet



Titan



Planet



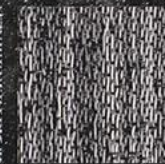
Andromeda



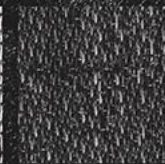
Neptune



Black Hole



Moonless Night



Eclipse





2TEC2 COLLECTIONS

Rolls

- Vinyl rolls have the visual appeal of broadloom woven textiles. The manufacturing on Jacquard looms allows attractive designs and different patterns. Rolls have a width of 200cm.

Tiles

- The vinyl tiles collection consists of square tiles (50x50 cm)

Shapes

- 2TEC2 PLAY (see our 2tec2 PLAY catalogue):
 - Triangle
 - Diamond
 - Plank
 - Mini tile
 - Hexagon



SEAMLESS TILES

Tiles installed in a uni-directional pattern have a sleek, monolithic appearance. There are no visible seams.

QUARTERTURN TILES

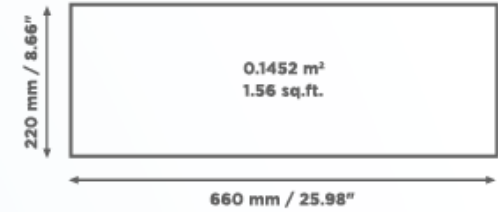
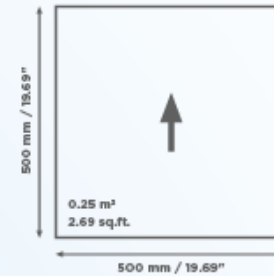
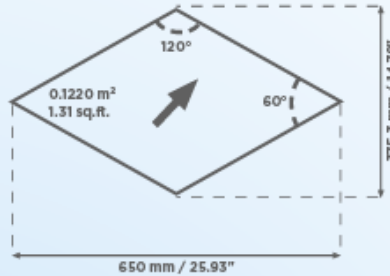
Tiles installed in a checkerboard pattern.



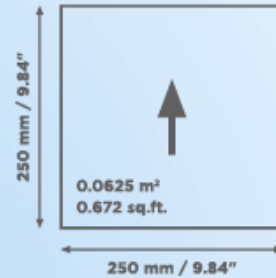
2TEC2 PLAY

2tec2 allows you to play with various shapes to create inspiring floors in woven vinyl.

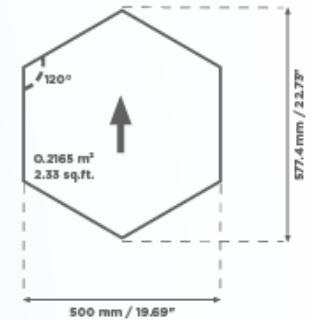
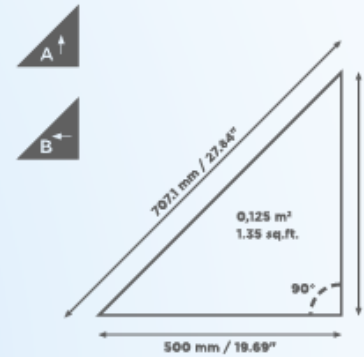
Diamonds, Hexagons, Planks, Triangles and Mini Squares are among some of our suggestions, but actually any shape and size is possible.



Warp direction



Warp direction





ACHIEVED WITH ONE COLOUR

Achieved with one colour installed in 3 different directions.

The 3 tones are the result of the directional shade variations which is a characteristic of 2TEC2.







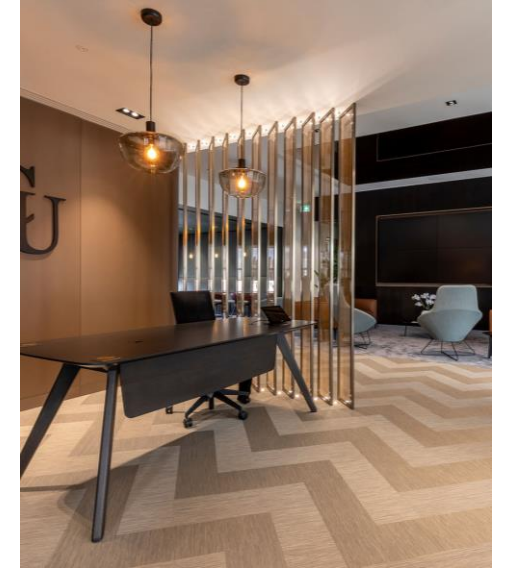
WHY 2TEC2 ?

2TEC2 SALES PRESENTATION



2TEC2 WOVEN VINYL IS A HIGH PERFORMANCE FLOORING

- Functional hybrid flooring combines characteristics of both carpet and hard surface flooring
- Rolls are seamless/seamless tile collection create a monolithic installation
- Excellent acoustical properties and under foot comfort (walking comfort)
- Stain resistant, waterproof and easy to clean
- Unlimited design flexibility

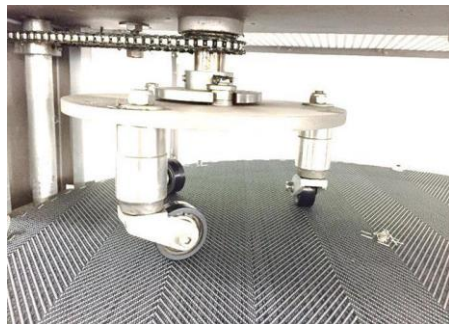


Characteristics of both carpet and hard surface flooring

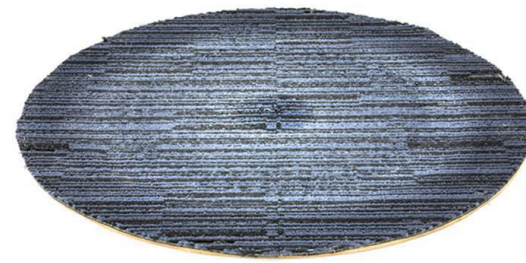
Characteristics of a traditional flat weave product but made out of the raw materials of a hard surface flooring.

2tec2 flooring achieves the highest level of durability, class 33, for wear resistance of textile floor covering.

2tec2 outperforms nylon carpet tiles when it comes to castor chair test (workspace/corporate)



2tec2



Belgian brand



American brand



Rolls are seamless / seamless tile collection

2tec2 is proud to have the only true seamless tiles in woven vinyl. It makes 2tec2 a unique product with endless possibilities.

Seamless tiles allow you to create a unique broadloom look.



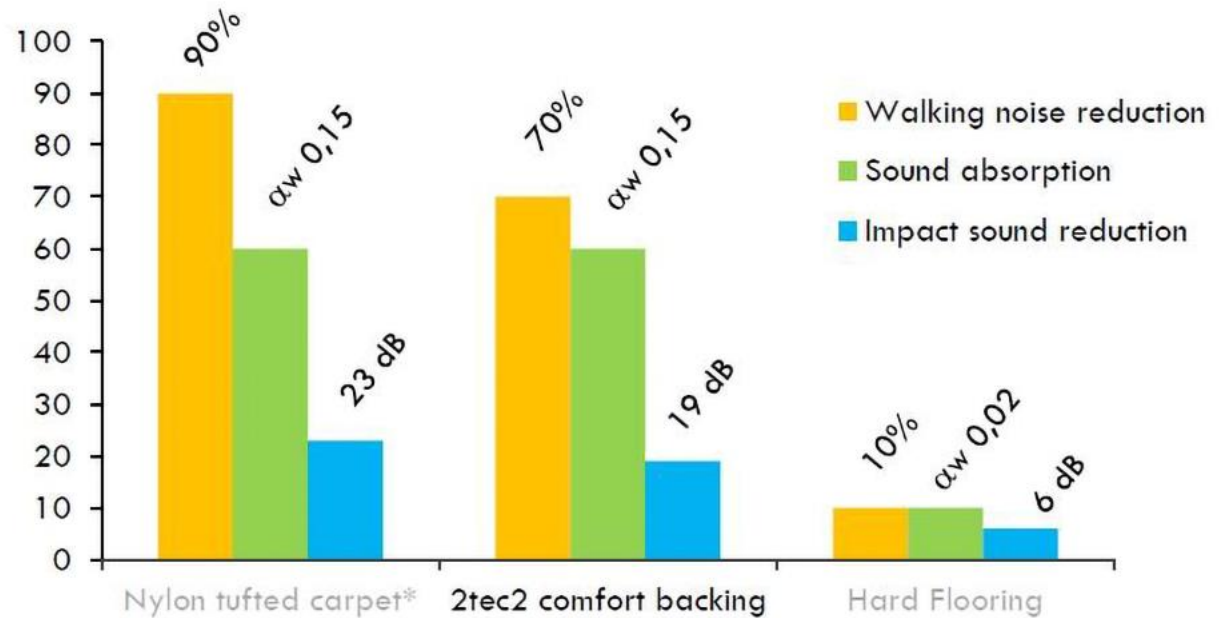
Excellent acoustical properties and under foot comfort.

2tec2 Comfort Backing is all the good of 2tec2 combined with an acoustic felt backing.

- **ACOUSTIC**
 - Improved impact sound reduction
 - Improved sound absorption
 - Elevated walking noise reduction
- **TECHNICAL PERFORMANCE**
 - Castor chair test: maximum score
 - Improved heat insulation
- **ERGONOMICS**
 - Added walking comfort
 - No additional underlay required
- **ECOLOGY**
 - Made out of 70% recycled PET
 - Reduced carbon footprint

ACOUSTICS

Innovation: Comfort Backing. 2tec2 is an excellent hybrid flooring. All the advantages of a woven vinyl flooring - cleaning, hygiene, durability & aesthetics - are now available with excellent acoustic properties. **You want proof:** this comparison chart illustrates the acoustic properties of various flooring options.

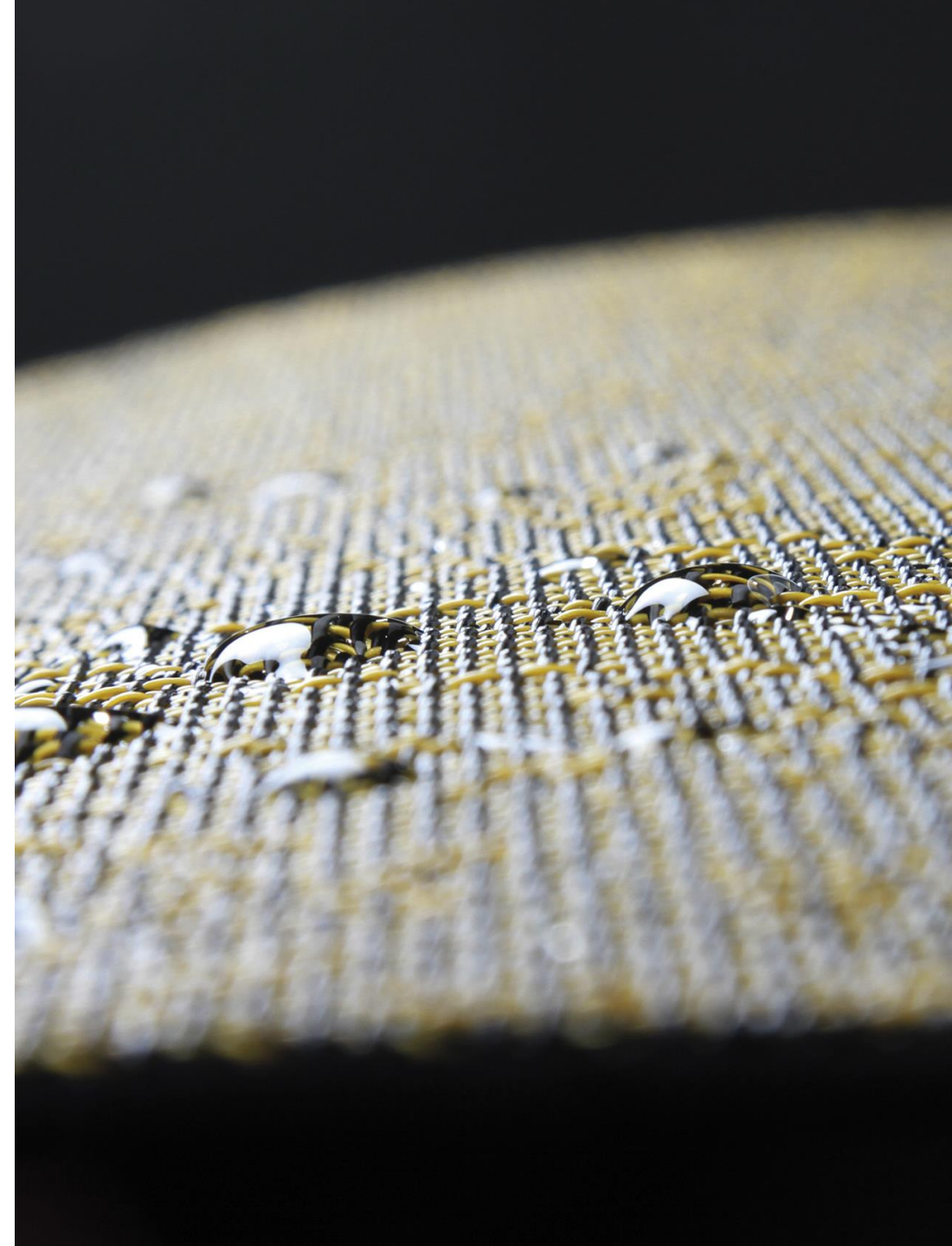


Brussels Expo
Interior Designer: Samia Bessalah
Location: Brussels, Belgium
Area: 7.000 sq.m.
2tec2: Diamond Tiles

Conclusion: The acoustic properties of 2tec2 are far better than hard flooring and within the same range of most textile carpet tiles.

STAIN RESISTANT, WATERPROOF AND EASY TO CLEAN

- One of the strongest points of 2tec2 flooring is its ability to clean.
- 2tec2 is 100% **waterproof**, no water penetration thanks to a compact vinyl backing that is non-absorbent.
- The vinyl yarns make that dust and dirt is not being absorbed and results in **easy and simple cleaning**.
- The woven structure makes that dust is being captured which leads to a remarkably **better indoor air quality**.

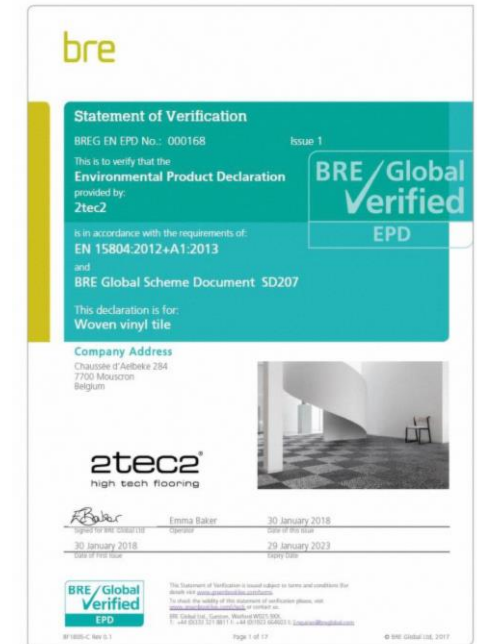


2tec2 contributes to a healthy work –and living environment !



APPROVED!

2tec2 flooring approved for breem and leed built projects














MAINTENANCE

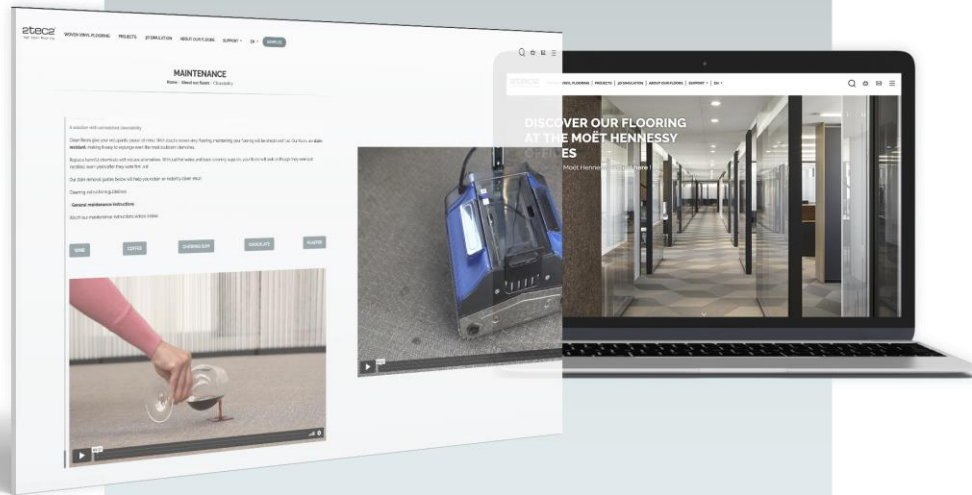
A proper maintenance guarantees:

- Increased life expectancy
- Perfect hygiene
- Better aesthetic
- Far better appearance retention in time!

A flooring solution with unmatched cleanability

The cleaning method is basically identical for any type and size of project.
The equipment needed depends on the size of the surface to be cleaned.

Spot cleaning	Daily maintenance	Periodic maintenance
	 <p>Wet/dry vacuum cleaner type NT 27/1 Advanced, Kärcher</p>	 <p>Duplex cleaning machine</p>
	 <p>Steam pressure machine type DE 4002, Kärcher</p>	 <p>Water injection-extraction vertical rotating brushes</p>
	 <p>Vacuum Cleaner with vertical rotating brushes Type CV 38/1, Kärcher</p>	 <p>LavorPro, Sprinter</p>



MAINTENANCE INSTRUCTIONS

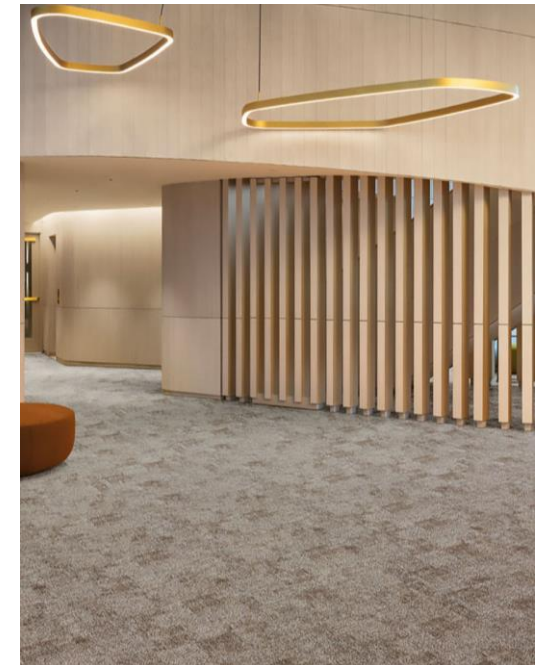
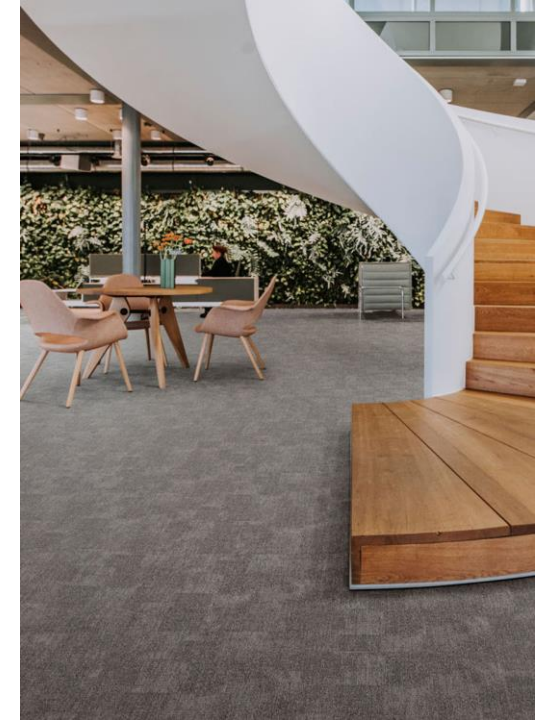
Watch the maintenance instructions videos on our website



APPLI- CATIONS

2tec2 floor coverings are designed for long and intensive heavy commercial use and offer a durable solution for indoor applications such as:

- Offices & Workspaces
- Hotels (fastest growing segment for 2tec2 !!!)
- Retail
- Showrooms & Exhibitions
- Healthcare & Leisure
- Public Spaces
- Residential





WORLDWIDE PROJECTS

WORKSPACE

Moët Hennessy, France - Koedood Dieselservice, The Netherlands - TU Delft, The Netherlands - Porsche, Norway - Amazon, Poland - ING HQ, The Netherlands - AIB, UK - Fabernovel, France - Tosoh, Netherlands - Bank Delen, Belgium - De Beauvoir Block, UK - Banco Cerregosa, Portugal - Pure Pharma, Belgium - Monaco Informatique, Monaco - Deloitte, France - DHL, Greece - Renault Technocenter, France - LinkedIn, USA - Dior, France - Ernst & Young, Greece - Ferrero, Italy - Tripadvisor HQ, USA - Warner Music, Belgium - Gazprom Neft, Russia - Google, UK - Cartier, UK - Coca-Cola, Germany - Pfizer, Hungary - Rolls-Royce, Belgium - Discovery Chanel, Italy - BBC, USA - Oracle, USA - FedEx, Belgium - Autodesk, USA - BNB Paribas-Fortis Bank, Belgium - Hay group, The Netherlands - Hewlett Packard, Romania - IBM, USA - Johnson & Johnson, Belgium - Kinnarps, France - Relief International, USA - Leighton Constructions, Australia - Microsoft, Finland - Philip Morris, Czech Republic - Portugal Telecom, Portugal - Shell, The Netherlands - Stanley Black & Decker, Italy - Volvo Trucks, Belgium - Buzzy Nest, Belgium - L'Oréal, Germany, France

SHOWROOM & EXHIBITION

Giorgio Armani, Italy - Lenovo, Czech Republic - BMW, Romania - Brice, France - Casaligne, France - Bouyghes Construction, France - Peugeot, Switzerland - Daikin Europe, Belgium - Dolce Gabbana, UK - Guerlain Cosmetics, France - Berlioni, Italy - Hyundai Salon De L'auto, France - Mitsubishi, France - Opel, Belgium - Porsche Group, Belgium - Le Tricentenaire, Luxembourg - Whirlpool, Czech Republic - Nissan, Germany - Motor Show, Germany

PUBLIC SPACES

Split Airport, Croatia - UGC, France - Cineplexx, Austria - The New York Public Library, USA - Singapore Library, Singapore - Boston University, USA - National Library of Korea, South Korea - National Library Board, Singapore - Brussels Expo, Belgium - Musée des Arts Décoratifs, France - City of Las Vegas, USA - University San Jorge Zaragoza, Spain - Philips Arena, USA - Navarra University, Spain - Norwegian Embassy, Greece - Romero University, Lithuania - Chocolate Museum, Belgium - Archeological & Historical Museum of Kernave, Lithuania - Harvard Club of NYC, USA - Korupark Cinema Complex, Turkey - Musée Du Quai Branly, France - Public Library, Belgium - LVMH, France - School of Management IEDC, Slovenia - Occidental College, USA - Grace Institute, USA - Médiathèque de Val d'Isère, France - La Grande Arche, France - MIPIM, France

RETAIL

Boggi, Italy - Selfridges, UK - Nishinomiya Gardens, Japan - CIC Bank, France - Rolex, Serbia - Reiseland, Germany - Lavazza, Italy - Hugo Boss, Worldwide - Longchamp, Worldwide - Atol, France - Axa Bank, Belgium - Breuninger, Germany - Carolina Herrera, Latin America - Credit Agricole, France - Creditbank, Bulgaria - Davidoff, Worldwide - Dorothy Perkins, Worldwide - Evans Stores, UK - Finanzbank, Turkey - Galeries Lafayette, France - ING Bank, Romania - Odea Bank, Turkey - Private Banking APK, Luxembourg - Rabobank, The Netherlands - Sampobank, Estonia - Samsung, Italy - Security Innovation LAB, The Netherlands - Sberbank, Russia - Vodaphone Spain, Portugal, Malta - Unicredit, Austria - HypoVereinsbank, Germany - Menswear, Norway - KBC, Belgium - Crédit Lyonnais, France - Shabelski, Ukraine

HEALTHCARE

Clinica Prof. Luis Jardim, Portugal - Psychiatric Center Caritas, Belgium - Life Time Fitness Center, USA - Kapittelhof Resthouse, Belgium - Arena Health Club, Portugal - Hillside Fitness Club, Turkey - Hyde Park Club, Australia - IZAR Wellness Institute, USA

HOSPITALITY

Thermea Palace, Belgium - Biblioteka N°1 Restorans, Latvia - Laguno Hotel, Belgium - Intercontinental, Japan - Princess Sofia Hotel, Spain - 9Hotel, Switzerland - RIU Hotel, Spain - Bel Air, USA - Novotel, France - W'hotel, USA - Asklepios, Czech Republic - Astoria Hotel, Slovenia - Byblos, France - Cannery Casino, USA - Club Méditerranée, France - Center Parks, France - Casino Barrière, France - Lancia Lounge Bar, Belgium - Lufthansa, Germany - Onde, Australia - Sabaya Resort, Australia - Sheraton Hotel, USA - Sofitel, Morocco - Soncna HisaHotel, Slovenia - Starbucks, Worldwide - Sun Hotel, Portugal - Room 230, Italy - Marriott, Worldwide

SO WHY AGAIN 2TEC2 ?



COMPARISON 2TEC2 WITH CARPET TILES AND HARD FLOORING

CARPET TILES		HARD FLOORING	
✓	Comfort	✓	Wear resistant
✓	Accoustics	✓	Cleaning
✓	Contemporary look	✓	Durability
✓	Design possibilities	✓	Modular
✓	Real Designs	✓	Long lasting new look
✓	Structure	✓	Hygiene
✓	Unique textures	✗	Accoustics
✓	Insulation	✗	Impact sound
✓	Modular	✗	Comfort
✗	Hygiene	✗	Insulation
✗	Cleaning	✗	(fake) printfilm designs
✗	Castor chair	✗	Cold feeling

WE OFFER THE BEST OF TWO WORLDS INTO 1 PRODUCT:

2TEC2

2TEC2 High Tech Flooring			
✔	Comfort	✔	Wear resistant
✔	Accoustics	✔	Cleaning
✔	Contemporary look	✔	Durability
✔	Design possibilities	✔	Modular
✔	Real Designs	✔	Long lasting new look
✔	Structure	✔	Hygiene
✔	Unique textures	✔	Castor chair
✔	Insulation	✔	Rolls & Tiles
✔	Modular	✔	Impact sound





SO THAT'S WHY



2tec2[®]
high tech flooring